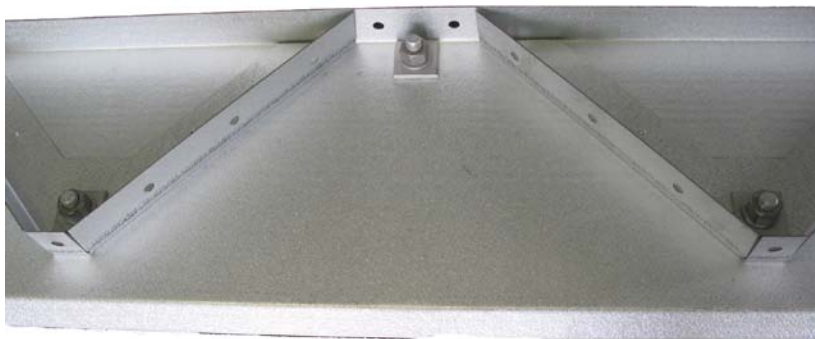


Industrial Base Plate



- Does Not Require Grouting after Erection
- 45° Drip Edge
- 8-bolt hole design for Arch Connection



Quality • Service • Value
The Most Trusted Name in
Arch Steel Structures



1023 Laskin Rd. Suite 109
Virginia Beach, VA 23451
800-341-7007

www.SteelMasterUSA.com